



Jonathan Robson

Candidate Property Practitioner
Registered with PPRA
(FFC 124 581 0)

0828066987
jrobson@huizemark.com



Neil Hopwood

Principal Property Practitioner
Registered with PPRA
(FFC 035 162 2)

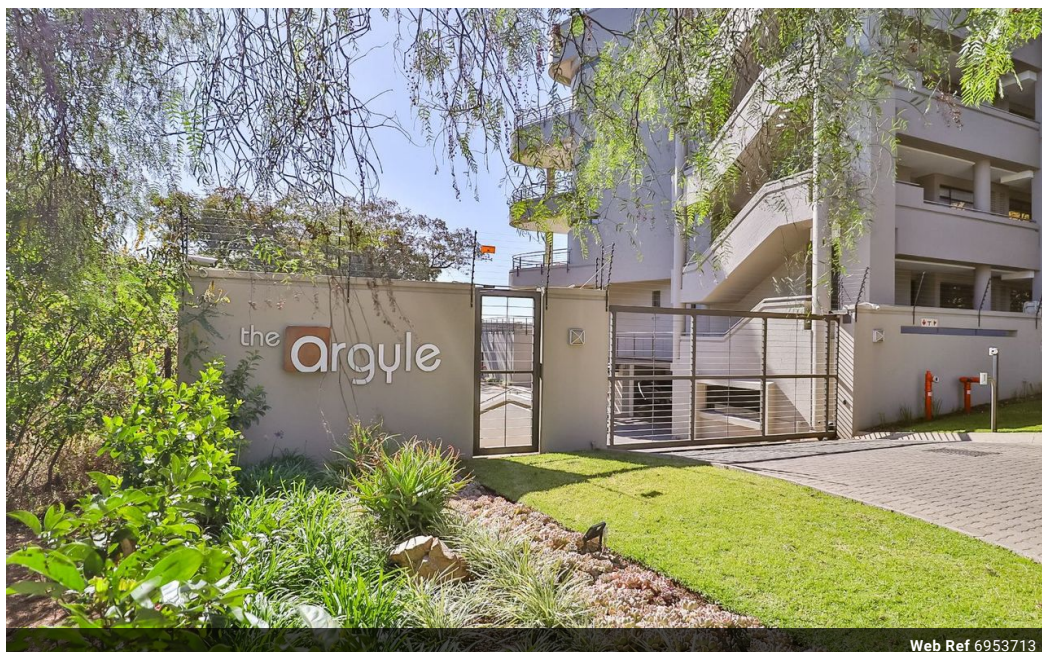
0824599791

nhopwood@huizemark.com

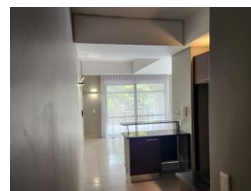
Contact Sandton

011 7894448

Huizemark Block 2A
Bryanston Gate Office Park
170 Curzon Road
Bryanston
2191



Web Ref 6953713



R1,750,000

 1  2

Monthly Bond Repayment R18,063.30

Calculated over 20 years at 11% with no deposit.

Transfer Costs R58,039.00 **Bond Costs** R30,875.00

These calculations are only a guide. Please ask your conveyancer for exact calculations.

Monthly Levy R2,522 **Monthly Rates** R1,182 **Special Levy** R871

Location, location location!

Positioned close to Jan Smuts Avenue and Winnie Mandela Drive, access to main arterial roads is a piece of cake. Hyde Park Corner and Sandton City are just around the corner to name a few.

This unique apartment features a spacious covered patio and a large curved glass window with a view of the street below. The unit is tiled with carpets in the bedroom and wooden folding doors to separate the open plan living area from the bedroom. There is a guest bathroom at the entrance and a full ensuite bathroom with a bath and shower. The kitchen has space for two appliances and a single door fridge.

One allocated parking bay.
Communal pool.
24 hour security on site.
Owners would like to sell as they are relocating.

Asking R1 750 000-00, all offers presented.

Features

Interior

Bedrooms 1
Bathrooms 2
Kitchens 1
Recep. Rooms 3

Exterior

Carports / Parkings 1
Security Yes
Pool Yes

Sizes

Floor Size 82m²