



**Neil Hopwood**  
Principal Property Practitioner  
Registered with PPRA (FFC 035 162 2)  
0824599791  
nhopwood@huizemark.com



**Jonathan Robson**  
Candidate Property Practitioner  
Registered with PPRA (FFC 124 581 0)  
0828066987  
jrobson@huizemark.com

Contact Sandton

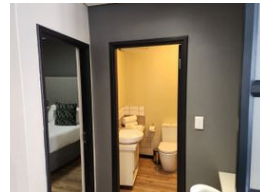
011 7894448

Huizemark Block 2A  
Bryanston Gate Office Park  
170 Curzon Road  
Bryanston  
2191



SOLE MANDATE

Web Ref 6739841



R2,280,000

**Monthly Bond Repayment** R23,533.90  
Calculated over 20 years at 11% with no deposit.

**Transfer Costs** R96,938.00    **Bond Costs** R36,530.00

These calculations are only a guide. Please ask your conveyancer for exact calculations.



The epicenter of Rosebank.. Socializing and shopping at your doorstep – R2 280 000

Laminated flooring throughout, this modern apartment feels welcoming the moment you step through the door. The open plan living space is made up of the kitchen and dining room/lounge area, with the lounge opening onto a covered patio. In the kitchen, there is space for one appliance.

Both bedrooms have built in cupboards with the main bedroom being ensuite. This bathroom has a shower and the other bathroom has a bath with a shower arm extension.  
Two basement parking spaces round off this neat unit.

Great 24 hour security.  
Wifi, backup power and concierge services on offer.  
Levies: R 2 748-62 & Rates: R2 500-00.  
All offers presented.

## Features

### Interior

Bedrooms	2
Bathrooms	2
Kitchens	1
Recep. Rooms	2
Studies	1

### Exterior

Carports / Parkings	2
Security	Yes
Pool	No

### Sizes

Floor Size	73m <sup>2</sup>
------------	------------------

### Extras

Property has a generator.