



Sylvia Gounden
Candidate Property Practitioner
Registered with PPRA (FFC 123 594 1)
082 451 6828
sgounden@huizemark.com



Amy Gopal
Non-Principal Property Practitioner
Registered with PPRA (FFC 115 188 7)
0659022158
agopal@huizemark.com

Contact Sandton

011 7894448


Huizemark Block 2A
Bryanston Gate Office Park
170 Curzon Road
Bryanston
2191




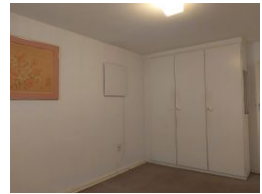
ON SHOW

Web Ref 5660354


On Show

 14:00 to 16:30

 Saturday, 12 April 2025



R850,000

 2  1

Monthly Bond Repayment R8,773.60
Calculated over 20 years at 11% with no deposit.

Transfer Costs R28,244.00 **Bond Costs** R21,450.00

These calculations are only a guide. Please ask your conveyancer for exact calculations.

Over 50's Village - Sonneglans Park

Appealing comfort, with large living space. Double column patio (largest in the complex), Lush gardens surround the unit, that are maintained by Body Corporate. The complex over looks a greenbelt which offers natures beauty and sounds.
Spacious 2 large bedrooms, 1 full bathroom, well appointed kitchen,
The joy of this setting is community and safety.
Clubhouse boasts a well-stocked library and entertainment area.
Nurses station, laundry
Internet connection available.
A lockup garage and plenty parking for guests.
Rates R104,14
Levy R1638,79, Health care R103,82, Security R629, 50, Sewage R598,44
Book your Exclusive...

Features

| Interior | | Exterior | | Sizes | |
|--------------|---|----------|----|------------|-------------------|
| Bedrooms | 2 | Security | No | Floor Size | 100m ² |
| Bathrooms | 1 | Pool | No | | |
| Kitchens | 1 | | | | |
| Recep. Rooms | 2 | | | | |