



**Cheryl Gibbs**

Candidate Property Practitioner  
Registered with PPRA (FFC 121 762 0)  
0836291844  
cgibbs@huizemark.com



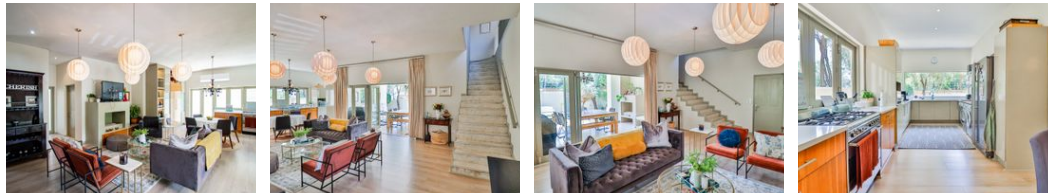
**Robin Devine**

Non-Principal Property Practitioner  
Registered with PPRA (FFC 090 505 5)  
082 326 5669  
rdevine@huizemark.com

Contact Sandton

011 7894448

Huizemark Block 2A  
Bryanston Gate Office Park  
170 Curzon Road  
Bryanston  
2191



R4,125,000

3 3.5 2

**Monthly Bond Repayment** R42,577.77

Calculated over 20 years at 11% with no deposit.

**Transfer Costs** R297,424.00 **Bond Costs** R53,495.00

These calculations are only a guide. Please ask your conveyancer for exact calculations.

**Monthly Levy** R2,623 **Monthly Rates** R3,747

ELEGANCE CLASS AND STYLE IN AN EXCLUSIVE ESTATE

Perfectly situated in this sought after estate this designer home offers glorious secure living at its best.

In this lovely light home you will find open trusses, chandeliers, a gas fireplace and only the finest finishes. Complemented with amazing décor this home has 3 charming spacious bedrooms all are en-suite with air -con in all the rooms and open areas, The main bedroom is extra spacious with a walk -in dressing room with plenty of cupboards and a jacuzzi bath and opens onto a large balcony with gorgeous open views. The lovely pyjama lounge is spacious and airy, perfect for those lazy TV days.

Designed for luxurious living and effortless entertaining, this home boasts plenty of open plan spaces, the main open plan living area with stunning lighting and chandeliers, comprises lounge/dining, with a gas fire-place,...

Features

Interior		Exterior		Sizes	
Bedrooms	3	Garages	2	Floor Size	416m <sup>2</sup>
Bathrooms	3.5	Security	No		
Kitchens	1	Pool	Yes		
Recep. Rooms	5				
Studies	1				