



Gail Mather

Non-Principal Property
Practitioner
Registered with PPRA
(FFC 009 395 8)

083 447 7327
gmather@huizemark.com

Contact **Sandton**

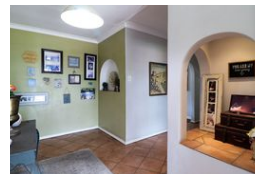
011 7894448

Huizemark Block 2A
Bryanston Gate Office Park
170 Curzon Road
Bryanston
2191

FEATURED



Web Ref 6809013



R5,500,000

4 3 2

Monthly Bond Repayment R56,770.36

Calculated over 20 years at 11% with no deposit.

Transfer Costs R462,807.00 **Bond Costs** R65,785.00

These calculations are only a guide. Please ask your conveyancer for exact calculations.

Monthly Rates R4,500

Large Family Home With Granny Cottage In Popular Gated Enclosure

Nestling on just over half an acre, in the sought after Devonshire enclosure, this spacious home is looking for a new owner to put their stamp on it and turn it into their forever dream home. It is the ideal spot to raise your family and make happy memories whilst enjoying the peace of mind afforded by the secure neighbourhood. The spacious cottage is perfect for extended family or can create income to supplement your bond. You will experience a warm, tranquil ambience the moment you walk through the front door.

The inviting entrance flows to a cozy dining room with direct access to the kitchen and 3 stylish lounges, all flowing out to the patio, garden and pool. A playroom or gym off the tv lounge adds to the convenience of this home. The kitchen is well appointed, features a breakfast counter, double eye-level oven,...

Features

| | | | |
|---------------------|---|---------------------|---------|
| Pets Allowed | | Yes | |
| Interior | | Exterior | |
| Bedrooms | 4 | Garages | 2 |
| Bathrooms | 3 | Carports / Parkings | 1 |
| Kitchens | 1 | Security | Yes |
| Recep. Rooms | 6 | Pool | Yes |
| Studies | 1 | | |
| | | Sizes | |
| | | Floor Size | 580m² |
| | | Land Size | 2,386m² |