



Neil Hopwood
Principal Property Practitioner
Registered with PPRA (FFC 035 162 2)
0824599791
nhopwood@huizemark.com

Contact Sandton

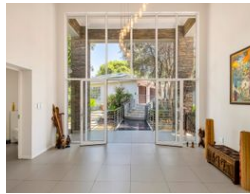
011 7894448

Huizemark Block 2A
Bryanston Gate Office Park
170 Curzon Road
Bryanston
2191



SOLE MANDATE

Web Ref 6816956



R8,499,000

5 5.5 3

Monthly Bond Repayment R87,725.69
Calculated over 20 years at 11% with no deposit.

Transfer Costs R810,104.00 **Bond Costs** R80,035.00
These calculations are only a guide. Please ask your conveyancer for exact calculations.

Monthly Rates R5,700

Exquisite Expansive Family In Close Proximity to Bryanston Country Club And St Stithians College

This extraordinary home, set on over an acre of rolling lawns and landscaped gardens, epitomizes understated sophistication, space and unparalleled convenience - a tranquil haven where timeless elegance and modern luxury meet. It is ideal for the large or extended family and is designed with the entertainer in mind. Meticulous attention has been paid to every detail and the home lends itself to superior living and practicality.

A feature entrance, flanked by koi ponds, welcomes you into an elegant, seamless dining room and lounge spilling onto a fabulous patio overlooking the sparkling pool and well established, lush garden - a perfect setting for relaxation or grand-scale entertaining.

At the heart of the home is a stunning dine-in kitchen with a cozy tv lounge. It features caesarstone counter tops, a gas hob,...

Features

Pets Allowed	Yes				
Interior		Exterior		Sizes	
Bedrooms	5	Garages	3	Floor Size	1,100m ²
Bathrooms	5.5	Carports / Parkings	1	Land Size	5,020m ²
Kitchens	1	Security	Yes		
Recep. Rooms	4	Pool	Yes		
Studies	1				